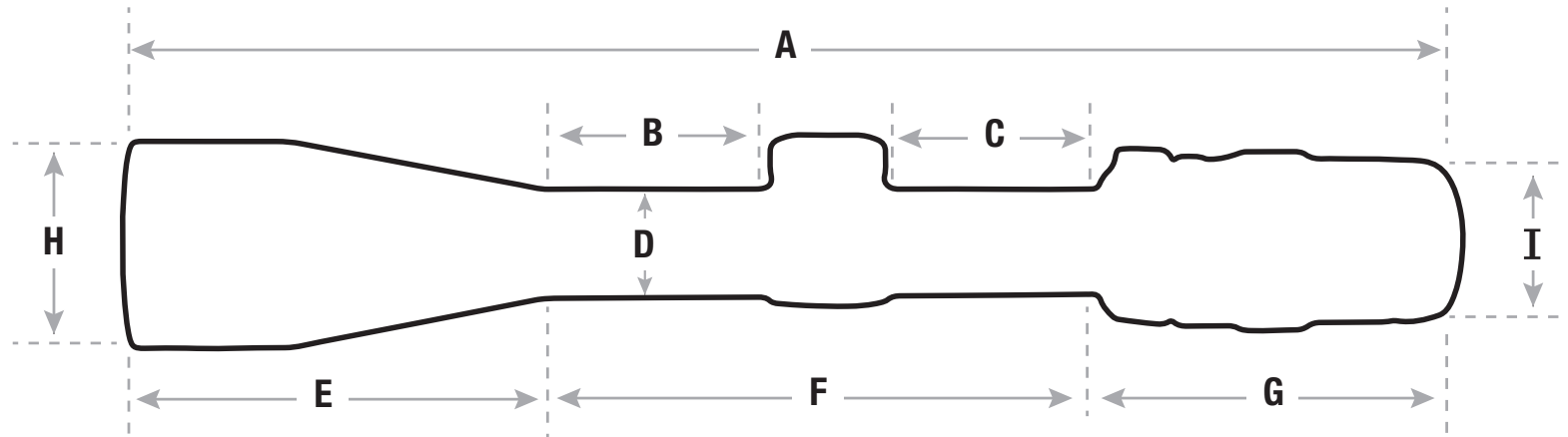


# Trijicon Credo® & Credo® HX Riflescope Dimensions



	<b>1-4x24</b> CR424 / CRHX424	<b>1-6x24</b> CR624 / CRHX624	<b>1-6x24 FFP</b> CRxxx	<b>1-8x28</b> CR828 / CRHX828	<b>2-10x36</b> CR1036	<b>2.5-10x56</b> CR1056 / CRHX1056	<b>2.5-15x42</b> CR1542 / CRHX1542	<b>2.5-15x56</b> CR1556 / CRHX1556	<b>3-9x40</b> CR940	<b>4-16x50</b> CR1650 / CRHX1650
<b>A</b>	10.5 in. (267mm)	10.8 in. (274mm)	10.8 in. (274mm)	10.8 in. (274mm)	13.1 in. (333mm)	13.8 in. (351mm)	13.9 in. (353mm)	14.7 in. (367mm)	12.3 in. (312mm)	14.4 in. (367mm)
<b>B</b>	3.4 in. (86mm)	3.9 in. (100mm)	3.2 in. (80mm)	1.7 in. (43mm)	2.1 in. (53mm)	2.3 in. (58mm)	2.4 in. (60mm)	2.1 in. (53mm)	1.9 in. (49mm)	2.0 in. (52mm)
<b>C</b>	2.2 in. (55mm)	2.0 in. (50mm)	2.7 in. (68mm)	2.6 in. (66mm)	2.7 in. (68mm)	1.9 in. (49mm)	2.0 in. (50mm)	2.2 in. (56mm)	1.8 in. (46mm)	2.1 in. (53mm)
<b>D</b>	1.2 in. (30mm)	1.2 in. (30mm)	1.2 in. (30mm)	1.3 in. (34mm)	1.2 in. (30mm)	1.2 in. (30mm)	1.2 in. (30mm)	1.2 in. (30mm)	1.0 in. (25mm)	1.2 in. (30mm)
<b>E</b>	N/A	N/A	N/A	1.3 in. (34mm)	3.5 in. (89mm)	4.8 in. (123mm)	4.5 in. (113mm)	5.2 in. (132mm)	3.7 in. (94mm)	5.0 in. (126mm)
<b>F</b>	6.9 in. (175mm)	7.2 in. (183mm)	7.2 in. (183mm)	6.2 in. (158mm)	6.4 in. (163mm)	5.5 in. (140mm)	5.9 in. (150mm)	5.9 in. (149mm)	5.1 in. (130mm)	5.8 in. (146mm)
<b>G</b>	3.6 in. (91mm)	3.6 in. (91mm)	3.6 in. (91mm)	3.3 in. (84mm)	3.2 in. (82mm)	3.4 in. (87mm)	3.5 in. (89mm)	3.6 in. (91mm)	3.5 in. (89mm)	3.7 in. (94mm)
<b>H</b>	1.2 in. (30mm)	1.2 in. (30mm)	1.2 in. (30mm)	1.4 in. (36mm)	1.8 in. (46mm)	2.6 in. (65mm)	2.0 in. (50mm)	2.6 in. (65mm)	1.9 in. (47mm)	2.3 in. (59mm)
<b>I</b>	1.7 in. (43mm)	1.7 in. (43mm)	1.7 in. (43mm)	1.7 in. (43mm)	1.7 in. (43mm)	1.7 in. (43mm)	1.7 in. (43mm)	1.7 in. (43mm)	1.6 in. (40mm)	1.7 in. (43mm)

\*E+B= one measurement (B), as objective bell is the same width as the tube measurement.

Specifications subject to change without notice.

\*Illustration is for demonstrative purpose, and is not drawn to scale.  
Rounded to nearest tenth of an inch, and nearest whole millimeter.